

LEGITLY.



SOFTWARE INSTRUCTIONS MANUAL

Table of Contents

Introduction	3
Where to start?	3
Setting Up your Profile	4
User Roles	6
Distributor	6
Customer	6
Introduction to our Sticker	7
More Features of Sticker	8
Your Assigned Serials.	9
Creating New Customer	9
Editing / Deleting Existing Customers	12
Assigning Serials to Customers	12
Creating A Product	13
Editing / Deleting Product	14
Associate Serial with Product	15
Serial Activation Using QR Code	16
End User Experience (For API Customers Only)	17
End User Experience (For Normal Customers)	19

Introduction

Legitly™ is a cloud based Platform that lets customers quickly authenticate Real Products – with added Photos, and Descriptions.

Using this manual you will be able to understand the complete work-flow of our software, like putting together your company's / brand profile, adding your products, their descriptions, including attributes, pictures, & associating these products with the stickers provided etc.

Where to start?

After buying a suitable package at <https://Legitly.com>, you will receive your credentials through your provided email address.

When you have your credentials, you can browse our software at <https://Legitly.com/Login>. Once there, you will see a login screen. Enter you credentials correctly and press **ENTER** or click **Sign In**. After Signing In you will be redirecting to your dedicated Dashboard.

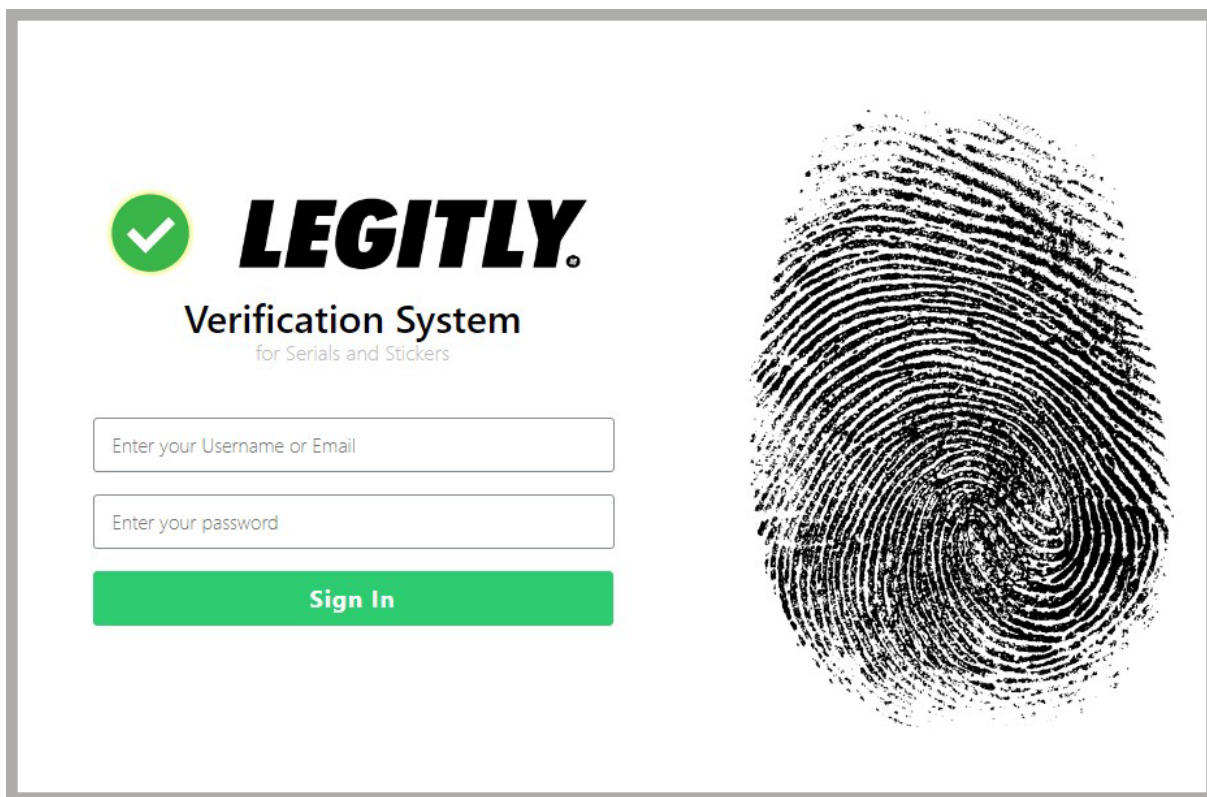


Figure 1 : Login Screen

Setting Up your Profile

After Signing In to the Dashboard, the first step is to set up your company's profile.

There are two ways to do that.

1. Click **"My Profile"** from the menu on the left.

or

2. Click on your **Name Icon at the Top Right Corner** and Select **"My Profile"**.

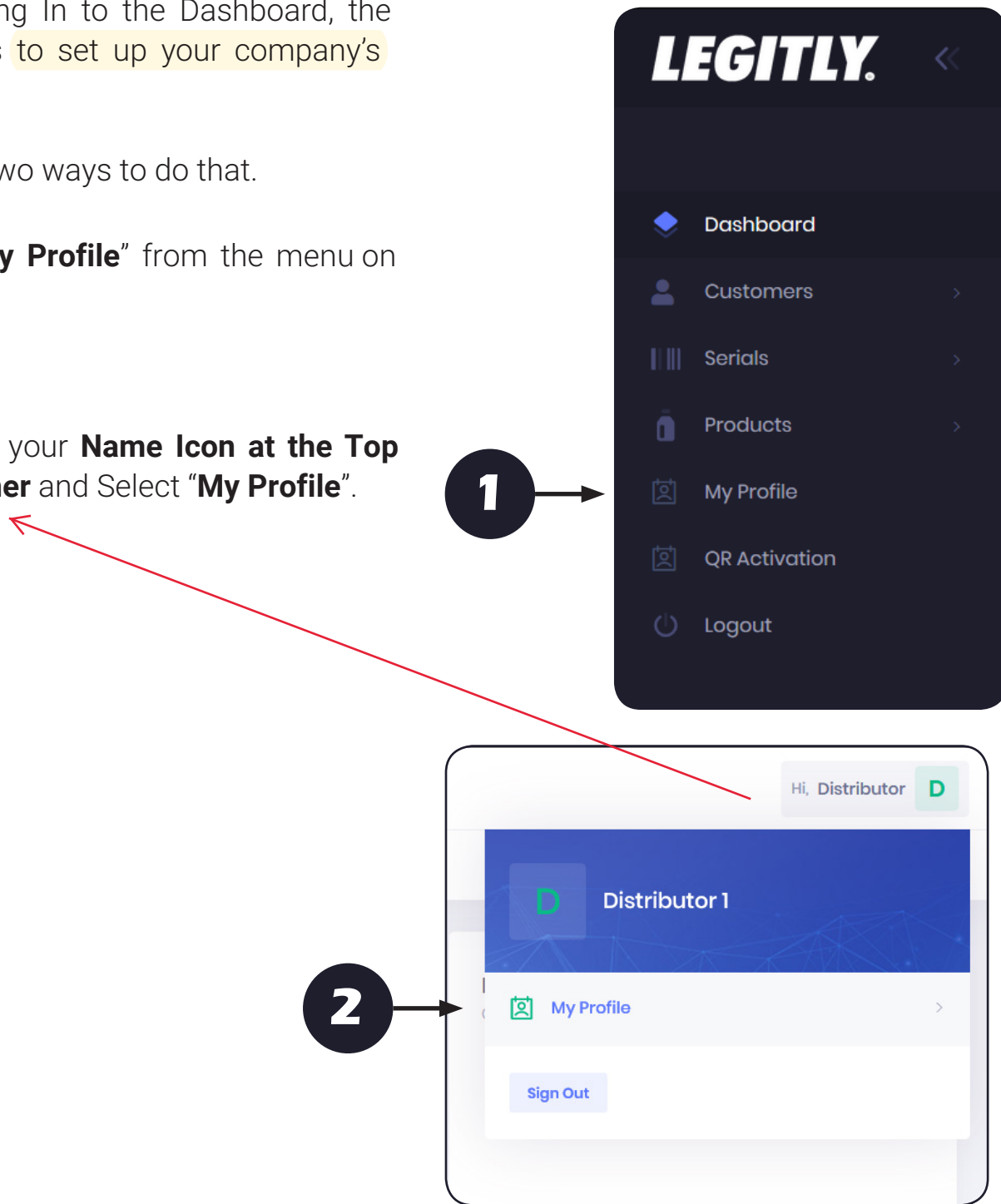


Figure 2: Profile Set Up Link

Next, your Profile Settings Page will be displayed. Click on **“Edit”** to edit your Profile Information. The Information you can edit here is:

1. Your First Name.
2. Your Last Name.
3. Your email address.
4. Your Company/Store Name (*This will be displayed to your customers*).
5. Your Company’s Logo (*This will be displayed to your customers*).
6. You can also change your password (recommended).

The screenshot shows a profile setup form with the following fields and content:

- First Name ***: Distributor
- Last Name ***: 1
- Email address: ***: distributor1@gmail.com
- Company Name**: DabJuice Inc.
- Logo**: A blue button labeled "Select Image" is positioned above a preview of a logo that says "DABJUICE" in a stylized font.
- New Password**: Enter New Password. Below the field is the text: "Please leave password blank, for no change."
- Retype New Password**: Enter New Password
- Save Changes**: A green button at the bottom of the form.

Figure 3: Profile Set Up

After making the changes click “Save Changes” button.

User Roles

There are two user roles, and you will be assigned one of them, based on your package. The User roles are as follows:

1. Distributor
2. Customer

Distributor

As a distributor, you will have your own products and stickers, as well as a new customer network. Through this hierarchy, your customers can choose to have their own branding, like their company name and logo, as well as their own products. Through this framework you will be responsible to assign serial numbers to your customers. You will see the "Menu" as shown in Figure 4.

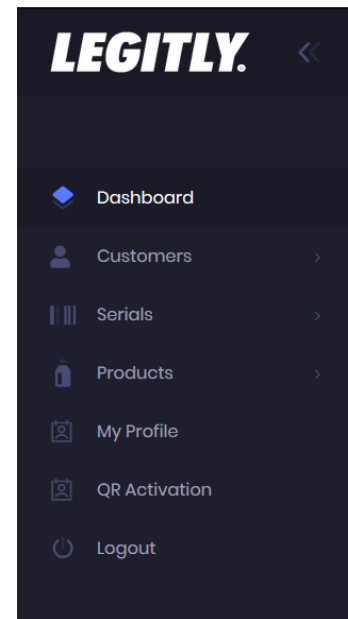


Figure 4. Menu Shown for Distributors

Customer

If you are a customer, then you will be able to 1. **Create / Edit / Update** your own products

2. Associate/De-associate Serials to your own products.

3. Activate/Deactivate Your Serials

4. Update you own profile.

You will see a Menu like shown in Figure 5.

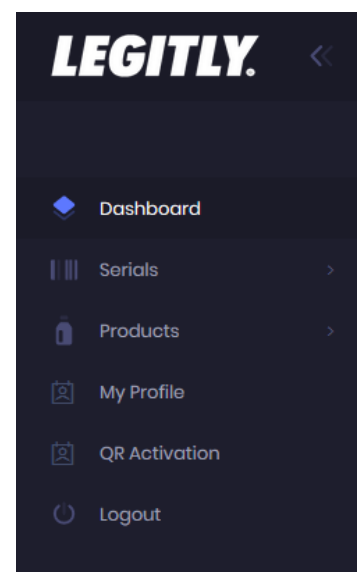


Figure 5. Menu Shown for Customers

Introduction to our Sticker

When you buy one of our packages, you will receive your Legitly™ stickers in the mail. This is a brief Introduction to our sticker.

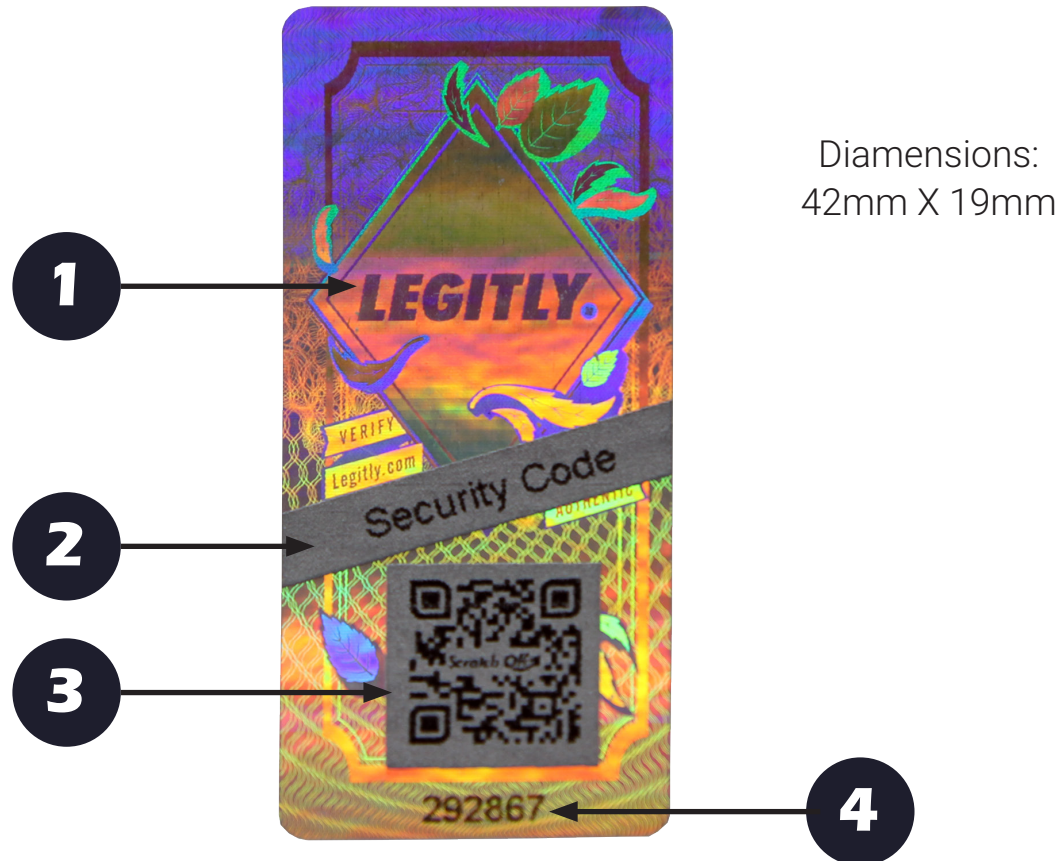


Figure 6: Standard Legitly Sticker

- 1** Window for Company's Logo
- 2** The actual serial number (*hidden under scratch coating*).
- 3** QR code (*hidden under scratch coating*).
- 4** Reference Number (*The Visible Number Sync'd to the Hidden Serial number*)

More Features of Sticker

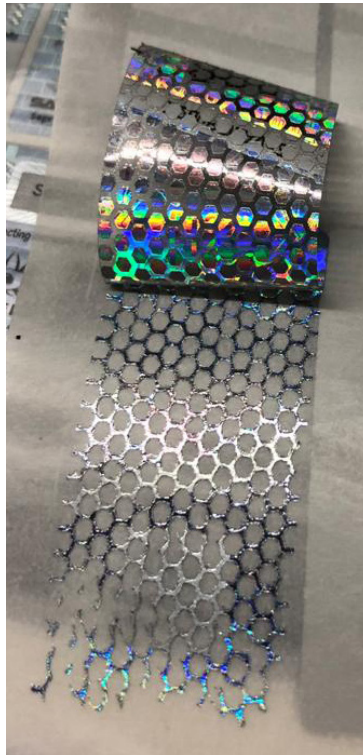


Figure 7: Tamper Resistant / One Time Use



Window For Custom Branding.

Figure 8: Logo can be customized according to your needs. (Depend upon your package)

Your Assigned Serials

If you have received your stickers, You will be able to see all the reference numbers in your dashboard through **Menu --> Serials --> My Serials**.

You can perform the following Actions on this page.

1. Activate / Deactivate a Serial

2. Delete the Serial (irreversible)



Used to Activate a Serial



Used to De-Activate a Serial



Used to Delete a Serial

***If you are a **Distributor**, you will be able to Perform the above actions for all of your customers too. You can then select a specific customer from the drop down as shown in Figure 9.*

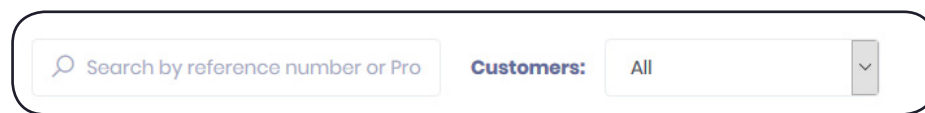


Figure 9: Select your customer from the drop down.

Creating New Customer

If you are a Distributor, you will be able to create your own customers. To create a new customer, go to **Menu --> Customers --> New Customer**. On this screen you will be able to add a new customer, and will be provided the following:

1. Add Customer First & Last Name

2. Email Address

3. Customer's Company / Brand Name

4. Customer's Company / Brand Logo

5. You will notice two toggle switches after the logo,

- a. Send to Admin
- b. Send to Customer

These switches are used for the following functions.

a. If Send to Admin is selected as "**ON**", then once an end user successfully authenticates a product, the owner of that product will receive an e-mail notification confirming the successful authentication of said product. (*Only For Api Customers*)

b. If Send to Customer is selected as "**ON**" then after successful manual authentication, the end user will receive an email notification, confirming the successful authentication of the product. (End User will enter his/her email address on manual verification page.) See Figure 16 on Page 18.

6. In the following field you can set a new password for your customer. (*Customer can change this from their profile page*).

7. API Key is used, if your customer wants to use API to authenticate his products. (A separate guide on this will be provided).

8. In the last Field, you will be able to assign serials from your lot, to the newly created customer. This is optional, leave the fields blank, if you do not want to assign serials at this time.

See Figure 10 on next page

New Customer


First Name *

Last Name *

Email address: *

Company Name *

Logo Select Image



Send to Admin OFF

Send to Customer OFF

New Password *

API Key

get new api key

Assign Existing Serials (optional)

Current Owner

Assigned Ref. Numbers : 500993-501002 (10)

Reference Numbers

Please selet starting and ending reference numbers.

Save

Figure 10. Adding New Customers

Editing / Deleting Existing Customers

To edit / delete the existing customer go to **Menu --> Customers --> View Customers**. On this screen you will see a list of all the existing customers you have. You have three available actions for each customer.



Edit the customer Information



Delete the Customer (Please note: This will delete all the serials and products of that customer, and **can not be undone**)



Disable the Customer. (This will temporarily disable the customer, he will not be able to login to his account, and also all of his activated serials and products will be deactivated. You can enable the customer by clicking this icon again.

Assigning Serials to Customers

This option is only available to Distributors. Select **Menu --> Serials --> Assign Serials**. From this page you will be able to assign your unassigned serials to your customers. See Figure 11.

In this area, you will be able to see all of your unassigned reference numbers. Select the customer, to which you want to assign the numbers. Next enter the starting and ending reference numbers in the boxes and hit "Assign Serials." Your Customer will be assigned with the serial numbers you provide them.

Assign Serials to Customer's Account

Current Owner MY UNASSIGNED SERIALS
Assigned Ref. Numbers : 500993-501002 (10)

New Owner customer1@gmail.com : Customer Customer

Reference Numbers Start End
Please select starting and ending reference numbers.

Assign Serials

Figure 11. Assign Serials to Customers

Creating A Product

The next step to this work-flow, is creating a product. If you are a distributor, you can create your own products, as well as create products for your customers. To do this simply go to **Menu --> Products --> New Product**.

From here, you will be able to select your customer at the top, using the drop down bar or assign the product to yourself, by selecting your own name.

On the New Product Page you will be able to do the following.

1. Add Product Name
2. Add Product Description. (*Our Feature rich Description box enables you to do text formatting such as Bold, Italic, Changing color of text, highlighting etc.*)
3. Add Product Category From a drop-down list.
4. Add up to 10 Images of the product.
5. If your product is cannabis related, you can simply Click the “Common Cannabis Attributes” and it will add the most common attributes used.
6. If you want include additional attributes, you can do so by Clicking “Add Attribute” button and can add as many attributes as you want.
7. You can add “Lab Test Results” to your products, by clicking “Add Lab Tests’ Results” button. (*An end user will be able to download this .pdf after successful authentication*).
8. Finally, add as many supporting documents or external links to your products as desired.

See Figure 12 on the next page

New Product

Customer *

Product Name *

Description *

B I U ↵ ↶ X² X₃ 13 👤 ☰ ☷ ☰ ☷ TI

Category *

Product Image

Attributes

To Move Attribute Down press CTRL+DOWN ARROW
 To Move Attribute UP press CTRL+UP ARROW

External Links

Product Documents

Figure 12: Adding New Product

Editing / Deleting Product

To Edit / Delete the existing products, Go **Menu --> Products --> My Products**. Here you will see a list of all the products. You can also search by product(s), and/or the customer who created it.

On this screen, there are three actions available, as shown in Figure 13.

#	Product Name	Attributes	Actions
1	Bottle Plus	Show Attributes (1)	
2	BottleSmal	Show Attributes (4)	
3	Pack of 10	Show Attributes (2)	
4	Nortokil	Show Attributes (1)	

Figure 13: View Product



Preview Product. (Opens in New Window - For Easy Viewing - and to "view as" a customer).



Edit Product.



Delete the Product.

Associate Serial with Product

The Next step in this guide is to associate the serials with your products. To do so, go to **Menu --> Serials --> Associate / De-associate**. If you are a distributor, you will see a drop-down bar, to select your customers, and if you are a customer, you will only see the drop-down with all the products you have. To associate serials to the product, proceed as follows: (See Figure 14).

1. Select the product from the dropdown bar.
2. Enter Starting and Ending Reference Numbers of the stickers.
3. Click Associate & Activate, and Done.
4. You can De-associate the serials by clicking on De-associate button.

Figure 14: Associate / De-associate Serials

Serial Activation Using QR Code (**LOT ACTIVATION/DEACTIVATION**)

If You are a Distributor, sending stickers to your customers, just got easier. Using this feature you can quickly activate all the stickers in a package, at once, by using our QR code application. For this you will generate a QR code by Selecting **Menu --> Serial --> App QR Codes**. On this Screen you can: (See Figure 15)

1. You will select the required Customer from the dropdown list.
2. You Will Enter Starting Reference Number of the stickers in the lot.
3. You Will Enter the Ending Reference Number of the stickers in the lot.
4. You will add any additional text, (you want displayed on Lot sticker)
5. Click on "Create QR Code" button.

A QR code will be generated. You can print this QR code and place it on the lot. Your Customer will be able to activate all the stickers inside the package, at once, by scanning the QR code, using our QR Code App. (*Found in the Apple/Android Store*)

New QR Code for Auto Serial Activation App

Customer *

Assigned Ref. Numbers : 500983-500992 (10)

Starting Reference No. *

Finishing Reference No. *

Additional Text: *

Creat QR Code

Figure 15: QR Code Generation for Auto Serial Activation

End User Experience (For Api Customers Only)

When all the above steps are completed. And an end user buys your product. Your Customer will be able to authenticate the product in two ways.

1. Manually entering the serial Number at <https://Legitly.com> (See Figure 16). The User will be required to enter their details; his First Name, Last Name, Email Address and the serial number found under the scratch coating on the sticker. After clicking verify they will be redirected to a successful authentication page. (See Figure 17 A & B)
2. By Scanning the QR Code on the sticker. For this Method, a customer will scratch the QR code, and will scan it using their QR Scanner (*Our version of a QR scanner can be found in Apple/Google Play Store*) on any phone, and he/she will be redirected to the successful authentication page. (see Figure 17 A & B).
3. **Please note: that in both cases, the successful authentication page will be displayed only once. For the second time it will return false results.**

LEGITLY.

Check Your Product Authentication

First Name *

Last Name *

Email address: *

Serial *

Serial is Case Sensitive

Figure 16: Manual Verification Page

End User Experience (For Normal Customers)

A normal user will be able to authenticate his/her product in two ways.

1. By Manually Entering the serial number (found under the scratch coating of their sticker). For this they will visit <https://Legitly.com> and will enter the serial number in the text box, found on the home page. Next, they will press the **"VERIFY NOW" button** (See Figure 17). After successful verification they will be redirected to the Verified Product Page, you created earlier. *(as shown in Figure 18 A & B).*

or

2. By Scanning the QR Code found on the sticker. For this the customer will scratch the QR code and will scan it with their QR Scanner on any phone, *(Our version of a QR scanner can be found in Apple/Google Play Store)*, and they will be redirected to the successful authentication page. (see Figure 18 A & B).

Please note that in both the cases the successful authentication page will be displayed only once. For the second time it will return false results.

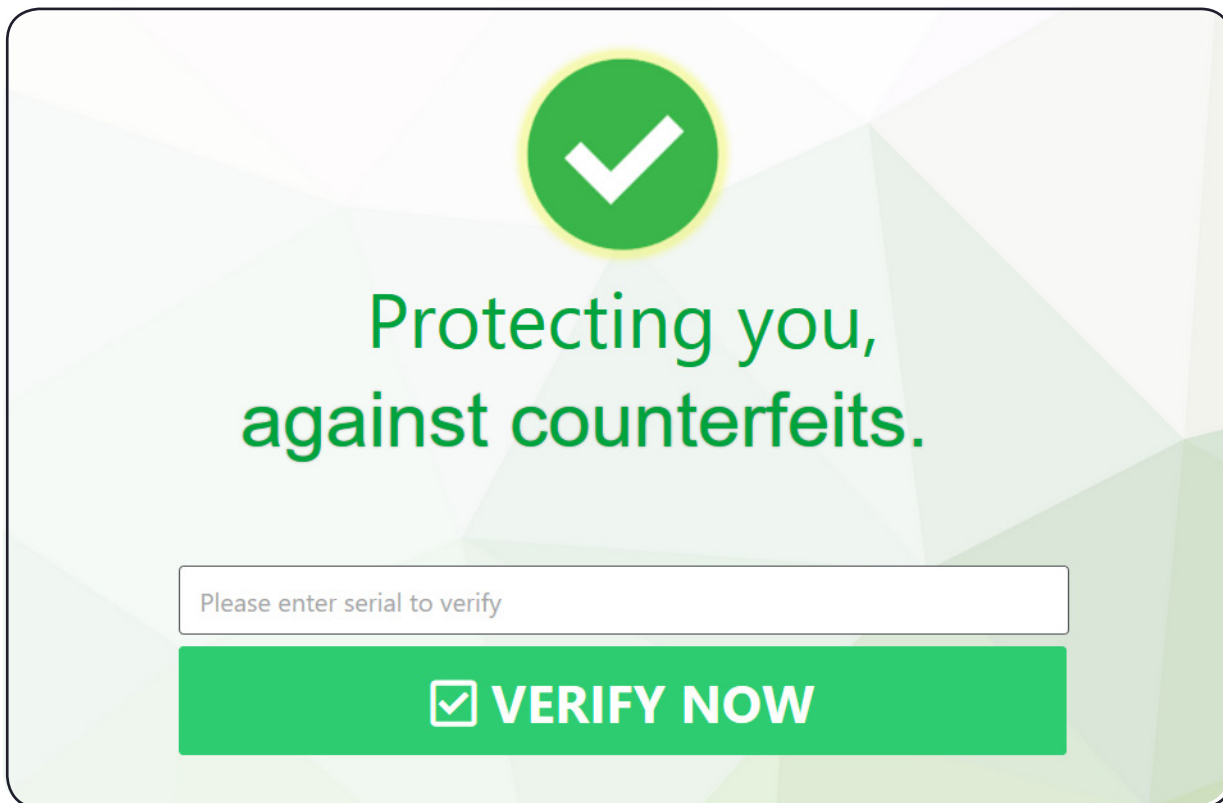


Figure 17: Manual Verification Page for Normal Customers

LEGITLY.

Verified & Legitimate Product



Product:



DabJuice Lemon Cake Vape Cartridge 1.0 Gram (1000 mg) ✓

Manufacturer:



Dabjuice

DabJuice Lemon Cake Vape Cartridge 1.0 Gram (1000 mg)

More importantly, our premium cannabis supports at-home or on-the-go vaping and self-medicating needs with safe ingredients, a rich, delicious taste, and with an ergonomic draw system with ceramic mouthpiece designed for enhanced inhalation.

We currently offer not only the amazing Lemon Cake Vape Cart above, we also offer other great flavors to choose from, including: Wedding Cake, Banana Kush, Gelato, Paris OG, and so much more.

Product Details:

- Organic Terpenes (Flavor)
- 510-Thread Compatible
- Low-Voltage Settings (Optional)
- Fully Ceramic CCELL Cartridges
- Fully Ceramic Mouthpieces
- High-Potency Content
- Discrete Packaging and Delivery
- Contains upwards of (93.91%) and (1.98%)

Select this or any of our other amazing flavors to support your clean vaping needs and you'll always receive premier quality, high-potency oils you can trust. As a reminder, these oils are a Schedule I controlled substance and should only be consumed or possessed by those age 21 and older.

**DabJuice is a California Compliant Product. Heavy Metal Tested, and Safe. CAT-3 Distillate + Organic Terpenes.*

Figure 17A: Verified Product Displayed after Successful Authentication (cont'nd)

Additional Information:

MANUFACTURER :	DABJUICE INC
MFG. DATE :	04/21/2019
BATCH # :	DJ - 000115
EXPIRATION DATE :	04/21/2020
DISTRIBUTION CO :	LEGITLY DISTRO Co.
THC % :	82.91 %
CBD % :	1.87%

LAB TESTED? :	YES
FULLY COMPLIANT? :	YES
RETAIL DESTINATION? :	CAREGIVERS EXPRESS
SKU # :	DJ - 4587754
UNIQUE ID # :	DJ-CA-00124
LOT # :	5452452

Product Images



[Certificate of Analysis](#)

Figure 17B: Verified Product Displayed after Successful Authentication



To learn more about How can we protect your Brand + Products.

Call (888) LEGITLY or visit LEGITLY.com



VERIFY.LEGITLY



VERIFY.LEGITLY



4LEGITLY